



---

**SORRENTO**  
Total\*: \$974,000

---

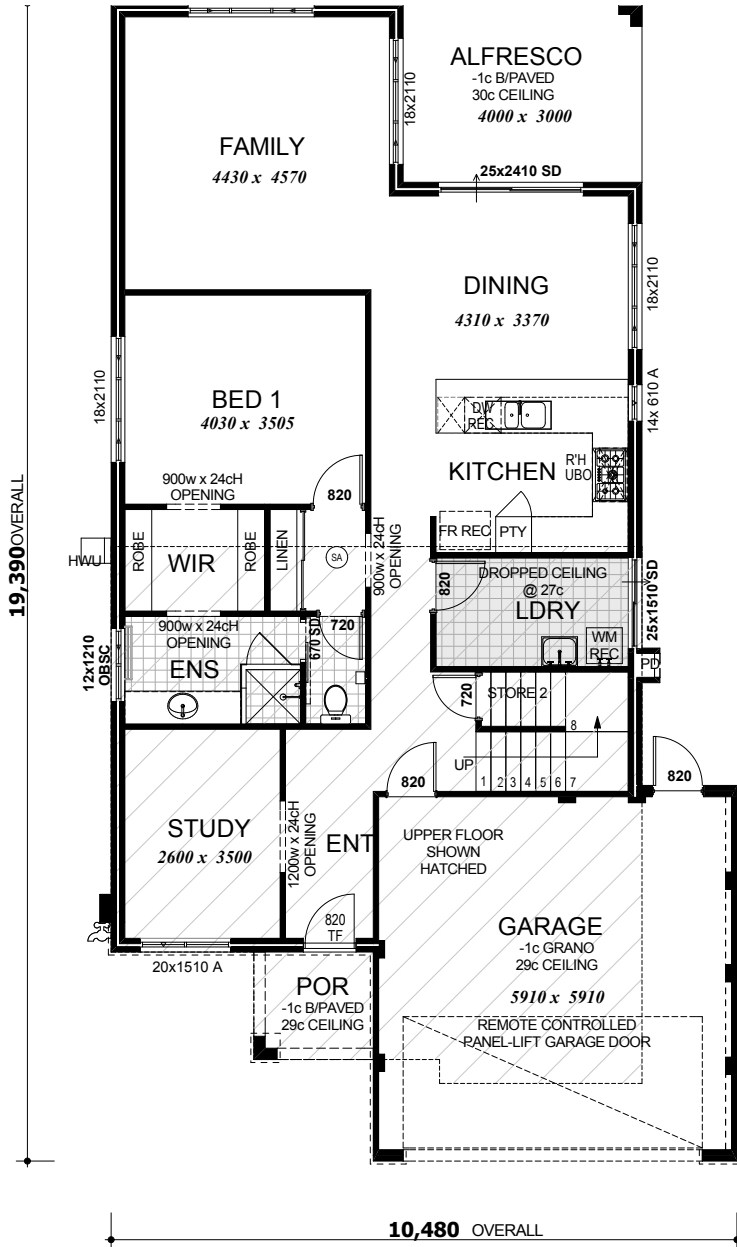
LOT 131 THOMAS MEWS ESTATE

Designed for 12m lots, the Sorrento by Wilson & Hart is a great two storey home for a growing family. With the Master Bedroom and study downstairs the home design allows for individual living spaces with the secondary bedrooms upstairs with their own activity area opening onto a front facing balcony. Open plan family, living and kitchen opening onto the alfresco complete the ground floor. As with all Wilson & Hart homes, the plans are modifiable to your requirements.

\*Includes "S" class & siteworks provision.

# SORRENTO

Kinbuild Pty. Ltd. t/as Wilson & Hart  
(A.B.N. 15 131 315 396)  
Building License Number 12703  
u8/37 Cedric St. Stirling, WA 6021  
Telephone (08) 9367 5044  
Fax (08) 9474 2988  
[www.wilsonandhart.com.au](http://www.wilsonandhart.com.au)



**GROUND FLOOR**



**UPPER FLOOR**

AREA (m <sup>2</sup> )	
Ground Floor	117.80
Upper Floor	67.82
Garage / Store	37.22
Balcony	5.58
Alfresco	12.00
Porch	3.60
	<b>244.02m<sup>2</sup></b>

Elevations / Perspectives shown are for illustrative purposes only

# SORRENTO